

# R-F-M

## THE MIDLANDS MART

— RUGBYFARMERSMART.COM —

The Charolais Pavilion, Avenue M, Stoneleigh Park,  
Kenilworth, Warwickshire CV8 2RG  
02476 697731 | [www.rugbyfarmersmart.com](http://www.rugbyfarmersmart.com) | 43/139/8013  
Office hours: Monday to Friday - 9.00am - 5.00pm  
Opening Time: Gates open at 5.30am until further notice

## MARKET REPORTS FOR MONDAY 6TH FEBRUARY 2023

### MARKET AT A GLANCE

Steers to 314p/kg & £2209  
Prime Heifers to 322p/kg & £2067  
Prime Bulls to 287p/kg & £2141  
Cows to 240p/kg & £1751  
Prime Hogg SQQ 247p/kg (982 Avg £97)  
Prime Hogs to 297p/kg & £140  
Store Lambs to £100 (150)  
Ewes to £220 (486 Avg £97)



## THURSDAY 9TH FEBRUARY SALE OF IN-LAMB EWES, STORE CATTLE & WEANLINGS

Catalogues & Entry Forms available by post, email or on the website  
[www.rugbyfarmersmart.com](http://www.rugbyfarmersmart.com) | [admin@rugbyfarmersmart.com](mailto:admin@rugbyfarmersmart.com)

## CATTLE: 130 FORWARD



Rugby Farmers Mart Prime Cattle  
Monday 6th February 2023.

Spring is on its way and the cattle spring forward again. No hold in the beef trade only movement up.

108 Prime Cattle -  
30 steers  
57 heifers  
12 young bulls  
9 Cast Cows

A very commercial show of cattle with no U+ or E grade cattle in the yard sold again to an ever increasing demand. Although the top prices not as high, cattle not to same standard as last weeks. All classes would be again dearer on the week.

Terry Kenealy topped the heifers at 322ppk with a Limousin heifer and again at £2067.

Terry again a bullock to 314ppk. Amorise Farms topping the £'s in the Steers at. £2209.

Stuart Friswell with his homebred limousin bull topping at 287ppk and Robert Leach at £2141 for a homebred Shorthorn Bull.

Again Terry again topping the cows at 240ppk. With RA Stephen's topping £'s in the cows at £1751.30.

More cattle are required weekly to suit demand. No vendor is left disappointed. Farm visits are available for us to look at your stock.

**Auctioneer: Emma Coupland (07808 271218)**

**\*\*FAT CATTLE NEW TIMINGS\*\***  
**COWS 8:30AM**  
**PRIME CATTLE 9AM**

## STEERS & BULLS

Top prices per Head				FA
British Blue (Bull)	722kg	£2209	Amorise Farms Ltd	Y
British Bull	710kg	£2179	Amorise Farms Ltd	Y
Limousin x	860kg	£2141	R F Leach	Y
Blonde	874kg	£2080	R F Leach	Y
Limousin	654kg	£2053	TV & J Kenealy	Y

Top prices per Kilo				
Limousin x	654kg	314ppk	TV & J Kenealy	Y
Limousin	632kg	308ppk	TV & J Kenealy	Y
British Blue	710kg	307ppk	Amorise Farms Ltd	Y
British Blue	722kg	306ppk	Amorise Farms Ltd	Y
Limousin	702kg	287ppk	RW & HER Trivett	Y

## HEIFERS

Top prices per head				FA
Limousin	650kg	£2067	TV & J Kenealy	Y
Charolais x	700kg	£1876	D J Hull	Y
Limousin x	652kg	£1884	D J Hull	Y
Charolais x	704kg	£1865	TGR Williams & Son	Y
Top prices per kilo				
Limousin x	588kg	322ppk	TV & J Kenealy	Y
Limousin	650kg	318ppk	TV & J Kenealy	Y
British Blue	644kg	317ppk	Amorise Farms	Y
Limousin x	576kg	310ppk	TV & J Kenealy	Y
Limousin x	506kg	298ppk	D J Hull & Partners	Y

## Len Eadon 1999-2022 Tribute page

<https://leneadon.muchloved.com/?fbclid=IwAR1QM9qsvxqscmyehDUwuVjrbR4KICliDqyezWbDYBEAsDaB164bZn50g4>

## COWS

Top prices per head Cows					FA
Limousin x	830kg	£1751	R A Stephens		Y
Aberdeen Angus	658kg	£1579	TV & J Kenealy		Y
Simmen	684kg	£1504	J Windridge & Son		Y
Simmen	652kg	£1414	J Windridge & Son		Y
Top prices per kilo					
Angus	658kg	240ppk	TV & J Kenealy		Y
Simmen	684kg	220ppk	J Windridge & Son		Y
Simmen	652kg	217ppk	J Windridge & Son		Y
Lim X	830kg	211ppk	R A Stephens		Y



## **SHEEP: 1618 FORWARD PRIME HOGGS: 982 FORWARD SQQ 247P/KG AVG £97.00**

Goats; Everyone wants meaty Goats. Selling to 297p/kg for a pen full from Peebles Farm Services. Goats that are meat but not over fat wanted weekly.

Hoggs; Simply put a flying trade on a bitter cold day. An Sqq of 247p/kg a trade 20p/kg above expectations and comparison. A massive trade differentiation with Export Hoggs in large demand throughout of Hoggs 38 to 43kg whilst heavier Hoggs reaching a limited enquiry trading more in the region of 220p/kg as New Zealand Imports purchased by our loyal Supermarkets provide a domestic Surplus of Home trade lambs with London knocking Hoggs out as cheap at 4.50p/kg!! Thankfully our wonderful independent firms, Exporters, Butchers and Wholesalers remain out their Marketing the wonderful British Lamb for us and using the most transparent procurement system to show what they can sell. Today this was evident with Exports well sold throughout and anything a little heavier a real struggle. Export weights topping at 279p/kg from N Wallington up from Oxfordshire selling Beltex whilst Passmore and

Nunnerley started their run off at pace selling 41kg to 278p/kg and K Crabtree 43.5kg 271p/kg and Passmore & Nunnerley 40kg 270p/kg and Albert Gooding 38kg to 268p/kg. City Lambs very dear seeing 27kg to 296p/kg for Stevie Freeman and 33kg from K Taylor 285p/kg. Heavies the hardest trade of all with 47kg 255p/kg for K Crabtree equal with SLAM Farming. N Wallington with quality across all weights seeing 46kg to 250p/kg and Crabtrees 46.5kg 249p/kg. In general better end weight 240p/kg with run of the Mill 220p/kg.

Export Hoggs topping at £120 for 43kg N Wallington, K Crabtree 43.5kg at £118, Passmore & Nunnerley 41kg £114. Heavies topping at £140 for Philly Batchelor who also sold Suffolks to £130.50 at 60kg with 58kg to £130. Messrs Moreby £130 and Mark Lambert £128.

Today Livestock Markets coming to the Fore to show how Meat Sales on the open Market are an hour to hour changing trade. Today a matter of Buyers able to buy only what they can sell but trade still a massive move forward on the week.

**Auctioneer: Thomas Wrench**

## PRIME HOGGS SQQ 247p/kg

### Per Kilo **under 45kg**

Romney	27.00kg	296ppk	S Freeman
Charollais	33.00kg	285ppk	K Taylor
Beltex	43.00kg	279ppk	N Wallington
Beltex	41.00kg	278ppk	Passmore & Nunneley
Beltex	43.50kg	271ppk	K Crabtree

### Per HEAD

Beltex	43.00kg	£120.00	N Wallington
Beltex	43.50kg	£118.00	K Crabtree
Goats	39.00kg	£116.00	MC & M Peebles Farm Services
Beltex	41.00kg	£114.00	Passmore & Nunneley
Beltex	45.00kg	£114.00	Passmore & Nunneley

### Per Kilo **over 45kg**

Texel x	47.00kg	255ppk	K Crabtree
Texel x	47.00kg	255ppk	S Mockler
Beltex	46.00kg	250ppk	N Wallington
Beltex	46.50kg	249ppk	K Crabtree
Texel	46.00kg	248ppk	W & M Emery & Son

### Per HEAD

Texel	70.00kg	£140.00	R J Batchelor
Suffolk	60.00kg	£130.50	R J Batchelor
Texel	58.00kg	£130.00	R J Batchelor
Suffolk	74.00kg	£130.00	WSE & CA Moreby

Sunday lairage is now open from 9am-3:00pm  
Gates close 3:00pm **STRICTLY.**

## DROVERS WANTED

To find out more details please call Sophie on 02476 697731 or email  
admin@rugbyfarmersmart.com

## CULL EWES: 486 FORWARD



Less numbers and weight but a little more bite. Meat wanted lean Ewes remain very much unwanted. Trade strong throughout with better end pure Ewes to £220 from Messrs Leadbeater. Cheviots to £148 for S Freeman and Suffolks to £148 for I Lill with others £145. Weighted Ewes all over £130. Mules to £120 for Glebe Shotteswell and £108 for Leam Farming with most £100 mark today. Ewes with meat becoming more demanded whilst the lean remain a burden to the Abbatoirs with most being bought to feed if viable.

*Auctioneer: Thomas Wrench*

### EWES

Texel	£220	DJ & BJ Leadbeater	Suffolk	£148	I P Lill
Texel x	£156	DJ & BJ Leadbeater	Texel	£147	E Brain & Sons Ltd
Cheviot	£148	S Freeman	Suffolk	£145	I P Lill

### FREELANCE FARM SECRETARY/PERSONAL ASSISTANT



Someone to help with the smooth running of your Farm, Business or Event, who can deal with invoicing, book keeping, livestock movements, planning and project management along with other administrative duties?

Excellent organisation skills with tip top verbal and written communication, and a high level of competency with various software programmes.

Used to dealing with all areas of running a successful Business.

A friendly and outgoing personality who is happy to work alone or as part of a team.

Contact Lynn  
07967138350

### FOR SALE

IAE Cattle Crush £350.00 ono  
In good condition.  
Telephone 07870264654

### FOR SALE

Round bale hay, stored in barn  
call 07730399198

”

## STORE SHEEP: 150 FORWARD

Small entry but good prices on the back of fat trade and topping at £100 for fairly Meated Texel x Lambs from P Honour.

More expected next week

*Auctioneer Tim Webster*

”

## CALVES: 22 FORWARD

Nice few Weaned Calves forward from F & J Clarke and Alan Thomas today with a good handful of buyers and sold to £570 for a 7mo Hereford Steer

Hereford Steers £460 to £570

Hereford Hfrs. £285 to £490

Angus Bulls £120 to £272

Angus Hfrs. to £272

All the Hereford's were 7 months and the Angus 2-3 months

Baby Calves

Only a handful of Babies today from Border Holdings and selling to £125 for a Hereford Heifer

Quiet period with Autumn Calving finished and Spring Calving just starting, we have a good number of calves staking up for our next sale

Next sale is the StowAg Show and Sale on the 20th February

### GRAZING WANTED

Ideally 20 and 50 acres in a 10 mile radius of Southam for sheep/cattle/ mowing  
Please call 07973954836



# Farm insurance, the way it should be

We're a family-run business and pride ourselves on forging long term relationships with our farming and agricultural clients. Covering the Midlands, South West and South East, we deliver an extensive range of farm, agri business and equine policies tailored to you.

Farm & Equine **01865 290915**

General **01865 844998**

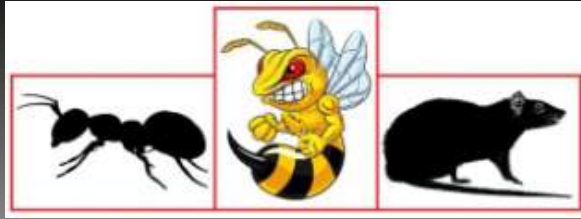
 Follow us **@County\_Farm**

[www.county-insurance.co.uk/farms](http://www.county-insurance.co.uk/farms)



Independent Insurance Brokers County Insurance Services Limited. Address and Registered Office: County House, Glyme Court, Langford Lane, Kidlington, Oxon OX5 1LQ. Authorised and regulated by the Financial Conduct Authority (FCA) (FRN: 597267). Company registered in England No. 08411634





# RDB Pest Control

Reliable | Trustworthy | Fast | Effective  
Competitive Prices

**Ryan Brunt**

**07922 091 459**

**[www.rdbpestcontrol.co.uk](http://www.rdbpestcontrol.co.uk)**

## **Why You Should Choose Us**

- ✓ Cater for Red Tractor and Farm Assurance Schemes
- ✓ Wide ranging experience on Farms with over 25 existing routine agricultural clients
- ✓ Fully qualified - RSPH Level 2 in Pest Control
- ✓ Trustworthy and security vetted
- ✓ Prompt, reliable fast response

## **A selection of sites where I have experience:**

Farmers Market • Local Airport • Farms • Warehouses •  
Industrial Estates • Food Premises • Private Houses • Country  
Estates • Building Sites • Local Councils • Schools •  
Day Nurseries • Care Homes

# WE COVER SMALL FARMS, LARGE FARMS AND EVERYTHING IN BETWEEN



From sheep farmers to arable farmers.  
Flower growers to poultry farmers.

NFU Mutual is proud to insure over 75% of UK farms with our Farm Select insurance. But we want more farms to benefit from great cover and local service. NFU Mutual has introduced Farm Essentials insurance – designed to meet the needs of smaller farms.

As your local agency, we are close by and can provide expert advice and hands-on support when you need it.

Call **Coventry Office** on **02476 444519**

NFU Mutual, 6 Eastwood Business Village,  
Harry Weston Road, Binley Business Park,  
Coventry, CV3 2UB



**NFU Mutual**  
FARM INSURANCE

## WANTED

Muck bags wanted so Leah and Clara (the lovely young drover girls) can continue to fund their uni social life! Please drop them at the market if you have any sitting around  
Thank you

## FOR SALE

Hyline point of lay hens and growing birds for sale.  
Brown egg layers suitable for free range or deep litter.  
contact Mark Martin on;  
07976 260 775

## T.A.R HIRE

### FOR HIRE:

- 10 & 14 TON REAR MUCK SPREADERS
- 12 TON TRAILERS WITH SILAGE SIDES
- ROAD SWEEPER
- FLAT TRAILERS
- GRASS TOPPERS
- CONTRACT MUCK SPREADING SERVICES

### CONTACT:

DAVENTRY (ROB) - 07801791212

HINCKLEY (ALAN) - 07802951179

FINISHING CATTLE? GROWING CATTLE? FEEDING SHEEP?

BERRYSTOCK  
FEEDS



Do you want **HIGH PERFORMANCE, COST EFFECTIVE, FULLY ASSURED and COMPLETE FEEDS?** Then contact **BERRYSTOCK FEEDS:**

Tel: 01788 890320 E-Mail: [john@berryfieldsfarm.co.uk](mailto:john@berryfieldsfarm.co.uk) Web: [www.berrystockfeeds.co.uk](http://www.berrystockfeeds.co.uk)  
BERRYFIELDS FARM, DAVENTRY, NN11 8NP



**THE MIDLANDS MART**

---

RUGBYFARMERSMART.COM

---

## **FORTHCOMING SALES**

**THURSDAY 9TH FEBRUARY  
SALE OF STORE CATTLE & WEANLINGS**

**Vendors who are wishing to sell stock  
please feel free to contact:**

**Tom Wrench** - 07774 723758 Market Manager & Auctioneer

**Tim Webster**- 07437 101163 Auctioneer & Fieldsman

**Emma Coupland**- 07808 271218 Fat Cattle Auctioneer

**Charlie Betteridge**- 07760266701 Fieldsman

**Nathan Shaw**-07460120293 Yard Manager

who will gladly make

**A FREE ON FARM VISIT & VALUATION**



**Follow us on social media:**

Facebook & Twitter - @RFMMidlandsMart

Instagram - rugbyfarmersmartLtd